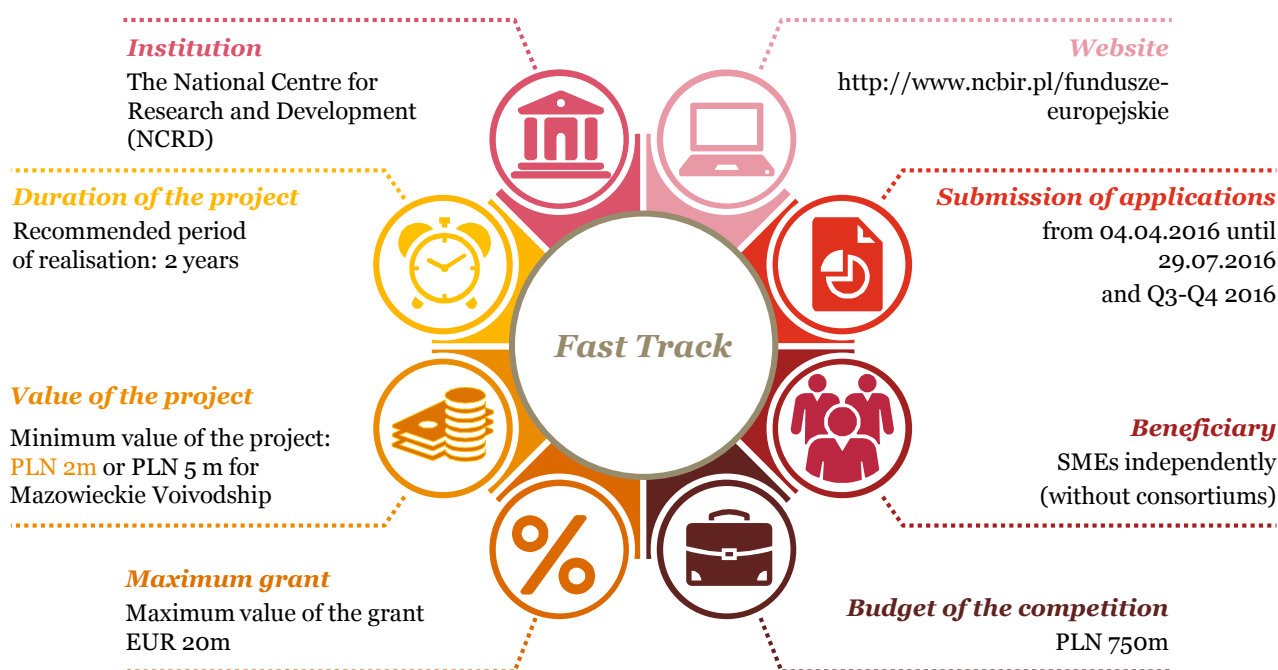


# Fast Track for small and medium entrepreneurs – grants for research and development projects - April 2016

## Basic information about call for proposal within Measure 1.1.1 OP SG „Fast Track”

Call for proposals in 2016 within measure called „Fast track” (Measure 1.1.1 Operational Programme Smart Growth) were announced. Support will be given to projects involving industrial research and/or experimental development, **and also leading to product/process innovations at least at the country level**. Competition is directed to small and medium entrepreneurs.



Fast track, as the first competition for research and development within new financial perspective 2014 – 2020, expects the following changes in current principles of projects realization:

- **Independent realization of the project** – industrial consortiums will not be qualified (consisting of entrepreneurs only), neither research – industrial consortiums
- Subcontracting costs** can not reach more than 50% of all eligible costs. Only research and development institutions\*, selected on a commercial basis, may become subcontractors. Private entities (e.g. other companies) can be engaged to conduct research works upon being accepted by the NCRD. Contract workers are also considered subcontractors
- **Intangible assets can be acquired** from research and development institutions\*. Their acquisition from other entities is admissible only upon being accepted by the NCRD

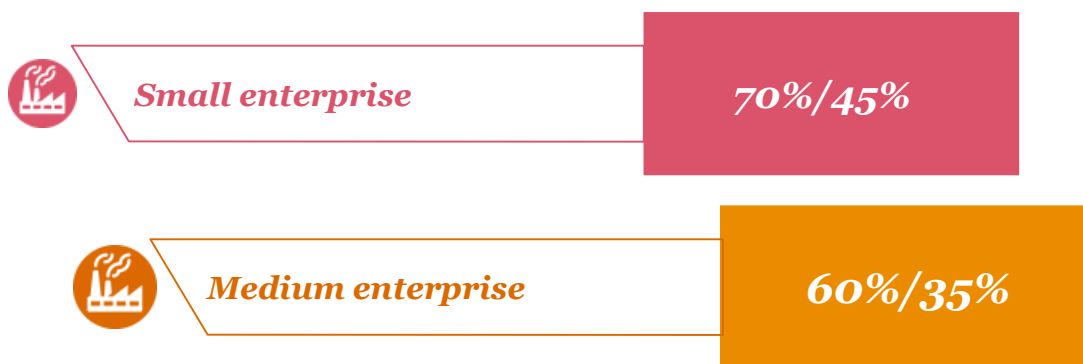
### ***Other changes and rules within the programme***

- Project complies with **National Smart Specialisation (NSS)**
- **Only 5 main criteria** of the scored substantive assessment
- **Beneficiaries are not required to return the income generated** by the project, including the income from the **prototype commercial use**
- The **maximum level of general costs** may be **17% of eligible costs** excluding subcontracting
- Under the grant agreement, **the beneficiary is obliged to implement results** of industrial research and experimental development into its business activity



### ***Level of co-financing***

### ***Industrial research/experimental development***

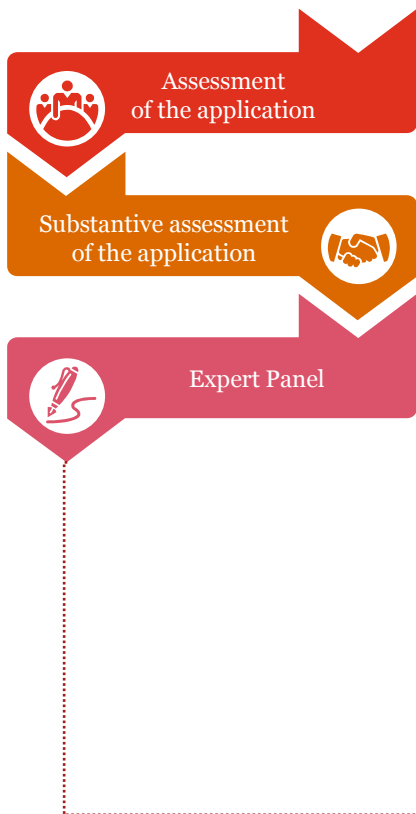


### ***Conditions of the co-financing level increasing***



***Results of the project are widely disseminated through conferences, publication, open access repositories, or free or open source software***

## Criteria of selection



### **Formal assessment of the application**

Formal assessment concerns mainly correctness, completeness, timeliness of submitting the documentation.

### **Substantive assessment of the application**

Substantive assessment is carried out on the basis of the following criteria:

- **Basic substantive criteria of access (Yes/No)**
  - **Project cover industrial research and experimental development or experimental development**
  - R&D works planned are adequate and necessary for the project and the risk associated with them has been properly defined
  - Research team and technical resources of the applicant ensure proper exercise of works planned in R&D project
  - Project complies with NSS
  - Project concerns product/process innovation
  - Intellectual property issues do not constitute any obstacle for implementing the results of the project
  - Management staff and way of management of the project enable its proper execution

### **Expert Panel**

**Experts evaluate projects based on the scored substantive criteria:**

- a) Planned R&D works are adequate and necessary to achieve Project's results, and the risks are defined (0 – 5 points)
- b) Research team and technical resources allow for a proper R&D works realization (0 – 5 points)
- c) Novelty of project's results (0-5 points)
- d) Market demand for project's results and profitability of implementation (0-5 points)
- e) Implementation of the project's results is planned in Poland (0 or 3 points)

**The project needs to receive at least 3 points in each category a) – d) in order to receive a grant and . The overall number of all points needed to receive a grant is 15\*.**

Projects that meet formal criteria and receive the required number of points in the substantive assessment will proceed to the final assessment given by the Expert Panel. During the Panel, the applicant will have an opportunity to refer to questions and doubts raised by the experts. **The recommendation of the Expert Panel is decisive when allocating a grant.**

*\*value not official, estimated on previous call.*

### **Common and complementary competitions:**

1. Fast track for large enterprises – competition autumn 2015 r.
2. Demonstrator for all enterprises – April 2015 .
3. Research for the Market – implementation of the results of R&D activities, grants for SME.

## ***How we can help:***

**Free of charge** initial analysis of the project at the eligibility criteria and chances of getting grant aid.

**Advisory** at the stage of applying for the grant:

- Preparation of competition documentation,
- Support during the project assessment,
- Advisory while clearing the project and the grant, i.e. : trainings, preparation/verification clearing documentation, preparation for project's execution audit by the authorized institutions.



## ***Let's talk***



**Andrzej Jarosz**  
*Partner*  
+ 48 502 184 608  
[andrzej.jarosz@pl.pwc.com](mailto:andrzej.jarosz@pl.pwc.com)  
PwC Poznan office  
Plac Andersa 7  
61-894 Poznań



**Jolanta Kokosińska**  
*Partner*  
+48 502 184 656  
[jolanta.kokosińska@pl.pwc.com](mailto:jolanta.kokosińska@pl.pwc.com)  
PwC Warsaw office  
Al. Armii Ludowej 14  
00-638 Warszawa



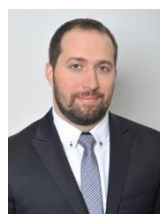
**Beata Cichocka - Tylman**  
*Director*  
+ 48 519 506 527  
[beata.tylman@pl.pwc.com](mailto:beata.tylman@pl.pwc.com)  
PwC Warsaw office  
Al. Armii Ludowej 14  
00-638 Warszawa



**Rafał Pulsakowski**  
*Senior Manager*  
+ 48 502 184 206  
[rafal.pulsakowski@pl.pwc.com](mailto:rafal.pulsakowski@pl.pwc.com)  
PwC Krakow office  
ul. Lubicz 23a  
31-503 Kraków



**Jacek Zimoch**  
*Manager*  
+ 48 502 184 165  
[jacek.zimoch@pl.pwc.com](mailto:jacek.zimoch@pl.pwc.com)  
PwC Wroclaw office  
ul. Swobodna 1  
50-088 Wrocław



**Tomasz Sajkowski**  
*Manager*  
+ 48 519 507 651  
[tomasz.sajkowski@pl.pwc.com](mailto:tomasz.sajkowski@pl.pwc.com)  
PwC Warsaw office  
Al. Armii Ludowej 14  
00-638 Warszawa